

COSprint web browser User Interface

The *COSprint* web browser User Interface is the most recent addition to the family of user interfaces available for the *COSprint* output management and print spooling product.

The others are the **COSMOS User Interface for Windows®**, the **X Windows System User Interface**, the **COSprint User Interface for PATROL®**, the **Character Terminal User Interface** and the **Command Line User Interface**.

COSprint is often deployed over enterprise networks incorporating several Unix, Linux and Windows® servers. It follows that users may value the option to control and administer *COSprint* modules by means of what is now the default user access method for networked users – the web browser. In addition to offering the advantage of a widespread standard, a user interface delivered via a web browser also permits *COSprint* to be accessed without regard to distance.

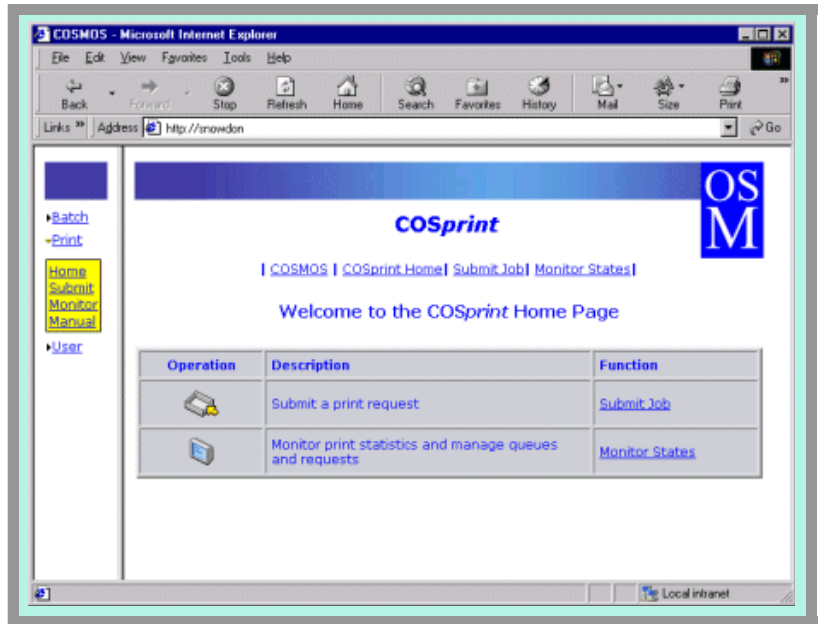
The benefit to MIS management comes from the fact that up to 40% of help-desk calls are print related. MIS managers can significantly reduce this workload by enabling users to view the status of their output – from their workstations and without recourse to the help-desk.

The web browser User Interface supports a defined selection of *COSprint* functions. It allows users to:

- Submit print jobs
- Monitor their print jobs on queues
- Control their print jobs on queues
- Control queues

Despite the use of the web browser, all these operations are controlled by the normal *COSprint* security mechanisms which users recognize as robust, fine grained and easily managed.

The first release of the *COSprint* web browser user interface has been tested to ensure compatibility with several of the most common web server and browser components, specifically:



The *COSprint* web UI home page

- Apache Web Server
- Sun™ ONE Web Server (formerly iPlanet Web Server)
- Microsoft® Internet Explorer 6.x web browser
- Netscape® 7.x web browser

Technical

COSprint home page

The *COSprint* home page presents itself similarly to the illustration shown on this page.

It gives access to the two main functions of *COSprint* which may be controlled by means of the web interface. The functions are:

- submission of a job to be printed (print request)
- monitoring of print jobs and queues

Submitting a print job

By selecting one of the following links:

[Submit](#) (in the menu in the left hand frame), or
[Submit Job](#) from the top navigation menu, or
[Submit Job](#) from the table in the COSprint home page

a page is presented called **Submit Print Request** which is similar to the following:

Submit Print Request

Host name: snowdon

File name:

Title:

Queue name: asas

Format: snowdon_A4

Copies: 1

Priority: 10

Line-up pages: 0

Link file:

Immediate printing:

Request retention: 0

Print form feed: n

Print header page: n

Print while spooling: n

Page list:

Print notification: n

Print time:

Submit Clear Form

This form is used to identify a file, assign its attributes, then submit it to COSprint to be printed. The parameters listed on the form are the standard COSprint parameters as described in the COSprint User Guide and the values shown apply to the particular Print Request (print job).

Monitoring print queues and their states

By selecting one of the following links:

[Monitor](#) (in the menu in the left hand frame), or
[Monitor States](#) from the top navigation menu, or
[Monitor States](#) from the table in the COSprint home page

a page is presented called **Statistics for All non-empty Queues** which is similar to the following:

Statistics for All non-empty Queues

Queue Name	Status	Hostname	Total	ERROR	RETAINED	STATIONERY	SUSPENDED	WAITING
asas	ACTIVE	snowdon	3	1	1	0	1	0
diva	ACTIVE	snowdon	4	1	2	0	1	0

In fact there are two Monitor facilities, namely:

- Monitor states
- Monitor queues

Whether either of these is made visible to any particular user is defined by the administrator.

Monitor states

The [Monitor States](#) link displays the page shown above. It lists all print queues that are not empty and shows the statistics that describe the current state of the print jobs currently located on each of the queues.

Monitor queues

The [Monitor Queues](#) link opens a page that displays an entry for every queue, as shown overleaf. The columns presented depend on the user's access permissions, as do the contents of the (yellow) control menu which appears when the user clicks on the

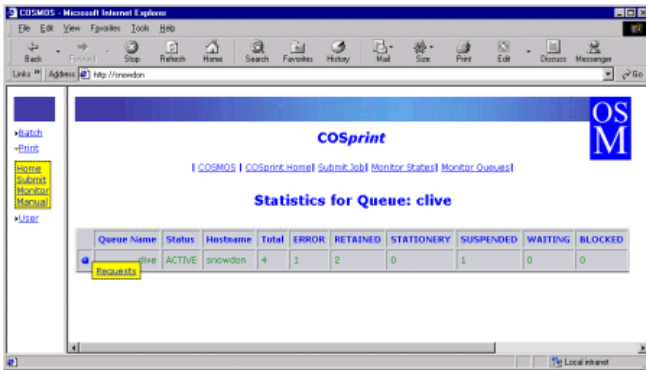
Monitoring All Queues

Queue Name	Hostname	Status	Description	Printers
asas	snowdon	ACTIVE	-	snowdon_nul
diva	snowdon	ACTIVE	-	snowdon_nul
snowdon_def	snowdon	ACTIVE	Default queue	snowdon_nul

icon located in the first column of the table.

Monitoring a queue's states

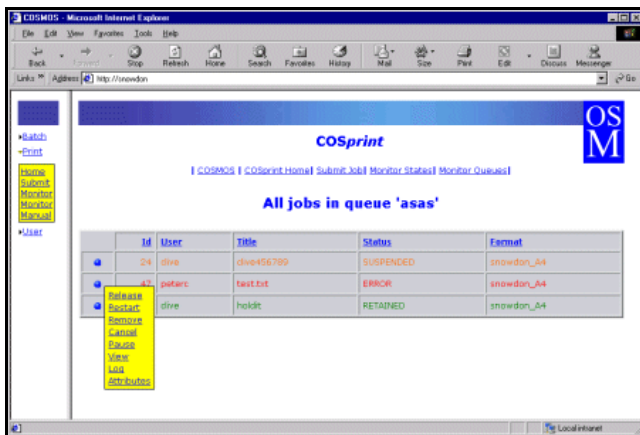
In order to see the states of the print jobs residing on a particular queue, the user selects the States option from the pop-up menu for that queue. The link opens the following page:



Monitoring print jobs

From the Monitor States and Monitor Queues pages, it is possible to see a list of the print jobs residing on a particular queue. The user's access permissions specify whether he/she can see all the print jobs on the queue, or just his/her own.

The page showing the list of print jobs appears in a similar format to the following:



Clicking on the icon in the first column of the table displays the yellow menu containing a set of options, each of which represents an action that may be performed on the chosen print job.

The possible options are:

[Release](#) [Restart](#) [Remove](#)
[Cancel](#) [Pause](#)

which control the current state of the print job, and

[View](#) [Log](#) [Attributes](#)

each of which opens a new page showing a different aspect of the print job. [View](#) shows the actual contents of the file that is sent to the printer. [Log](#) displays the print job's log file. [Attributes](#) lists all the standard COSprint attributes of the selected job.

As an example, a print job's attributes are listed in a manner similar to the example shown in the column opposite.



Open Systems Management

Open Systems Management is a leading independent author of systems and security management solutions and software products for enterprise and distributed computing using UNIX, Linux and Windows® server platforms.

OSM markets solutions in five main areas:

- user provisioning and access control
- job scheduling
- output management
- operations workflow management
- privileged user management

SAP, R/3 and the SAP logo are registered trademarks of SAP AG.
PATROL, BMC Software, the BMC Software logos and all other BMC
Software product or service names are registered trademarks or trademarks
of BMC Software, Inc. All trademarks and registered trademarks are rec-
ognized by OSM.



www.cosprint.com

OPEN SYSTEMS MANAGEMENT, INC.
1511 Third Avenue, Suite 905
Seattle WA 98101
USA

Tel: (866) 601 8011 (toll-free, USA)
Fax: (206) 583 8374
info@osminc.com

www.osmcorp.com



OPEN SYSTEMS MANAGEMENT LTD
Kings Ride Court
Kings Ride
Ascot, Berkshire SL5 7JR
UK

Tel: +44 (0)1344 638000
Fax: +44 (0)1344 638011
info@osm.co.uk